

Boardmaker Plus!

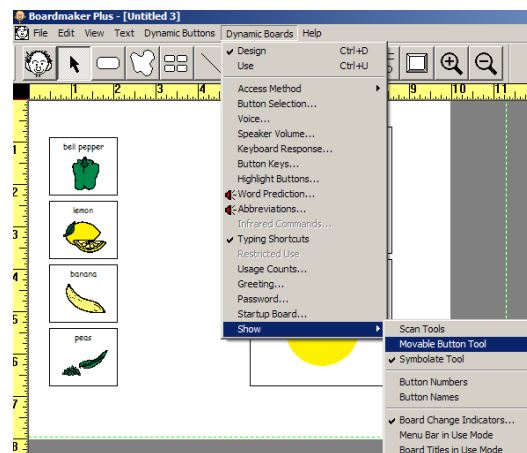
Making a movable button activity for the SMART board

Created:3/10
Updated:
Author: JC

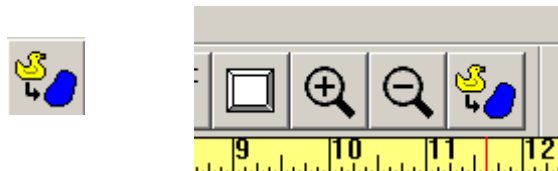
This handout is designed to take you through the basics of making a movable button activity using Boardmaker Plus! version 6.

1. First you need to turn on the Movable Button Tool.

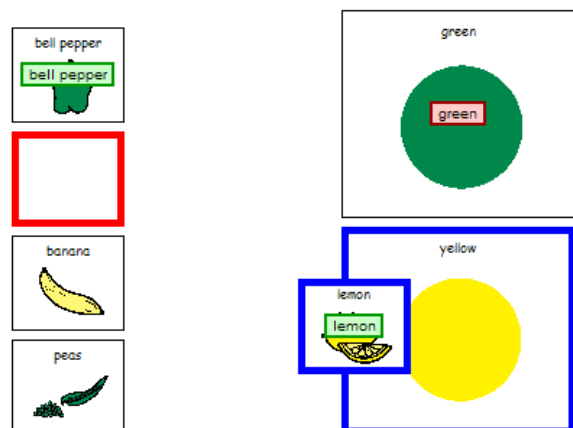
2. Go to Dynamic Boards, then Show, then Movable Button Tool.



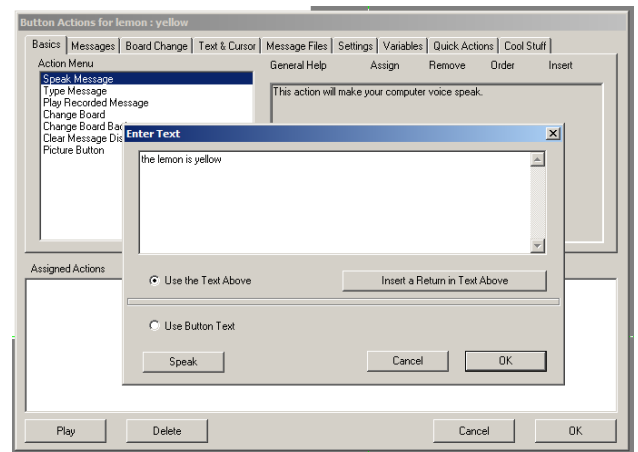
3. Once you have selected it, a new icon will appear in the Toolbar.



4. Now click on the Movable Button Tool and then click on the button to be made 'movable.'
5. Name it e.g. lemon, OK
6. Drag and drop it on a 'Destination Button' and name it e.g. yellow, OK.

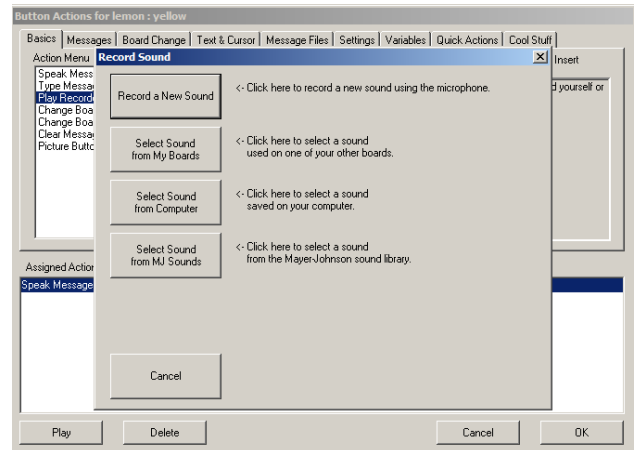


- Now give the movable button its 'actions' e.g. speak message 'the lemon is yellow', OK



- You could even add a recorded sound effect or use a sound (wav file) saved on your computer, as a reward for the correct destination.

N.B To change the destination button actions you need to select the movable button tool, drag and drop the movable button again and then make your changes.



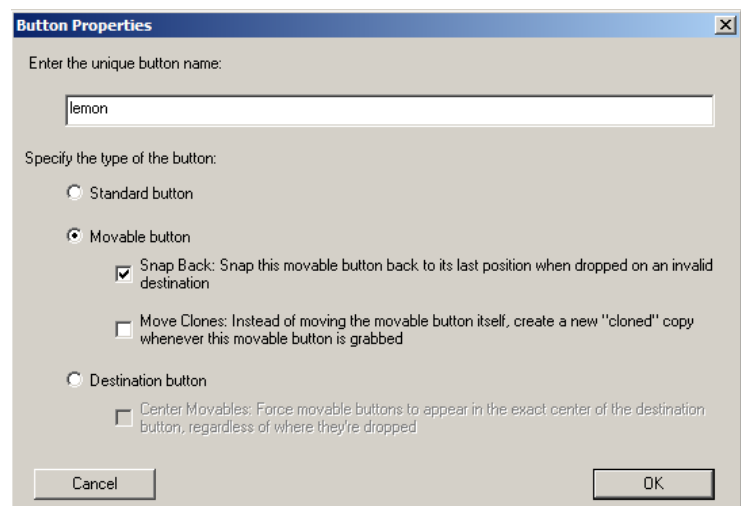
- Now, press Ctrl+U 'Use Mode' to try it out.

- Repeat steps 4-8 for the rest of your activity.

Getting the button to 'snap back' if it is moved to the wrong destination

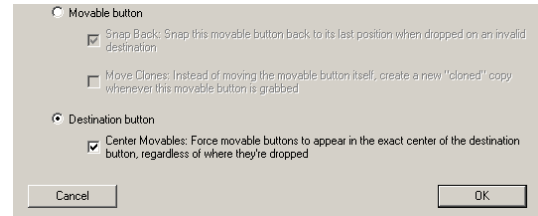
*gives positive reinforcement by accepting correct responses only. Not suitable for activities where you want to check the number of right and wrong responses.

- Right click on the movable button which you want to 'snap back.' (the Movable Button Tool must be deselected)
- Select 'Movable Button Properties'
- Under 'Movable Button' select 'Snap Back' press OK
- Press Ctrl+U to try it out



Getting the Movable Buttons to appear in the centre of the Destination Button * looks neat when one movable button is put in its destination but, if more than one button is moving there, each one will cover the previous response.

1. You might also want the Movable Buttons to appear in the centre of the Destination Button.
2. If so, Right click on the 'Destination Button.'
3. Select 'Destination Button Properties.'
4. Under 'Destination Button' select 'Centre Movables.' Press OK



N.B. You must right click on the 'Movable button' to select the 'snap back' property and right click on the 'Destination button' to select the 'Centre Movables' property.

Your completed activity is now ready to try out. Press Ctrl+U for 'Use Mode' and press Escape to get back to 'Design Mode' when you are finished.