

# Clicker 4, Wordbar and ClozePro Grids Downloading onto your PC

## Quick Guide

Created: December 04  
Updated: 0.3/05  
SON

### LearningGrids.com (www.learninggrids.com)

LearningGrids.com is a huge and continuously growing bank of ready-to-use resources and is a free service is for teachers and other users of Clicker 4, Wordbar and ClozePro. The site has a collection of high quality resources, many with graphics that are ready to use, but can also be easily modified.

When you go to the web site you will be asked if you want to go to the UK or the US site. Click on UK site which will take you to the Welcome to LearningGrids.com screen shown below.



Browse through the resources before downloading them for use in the classroom. To download the free resources you need to log in with your user name and password. If you (or your school) do not already have a user name and password, it is a very straightforward procedure to get registered.

Near the top of the screen you will see the link to FREE registration.

Your first name:

Your last name:

Organization:

Country:

Email:

**Your Log In details**  
Your username must be unique - you could use your full name, or your email address. Then choose and enter a password. For security, don't use the same password you use for other web sites or to access your email.

Username:

Password:

Retype Password:

**LearningGrids.com newsletter**  
This is a free email newsletter for registered users, which keeps you informed about the latest resources and developments.

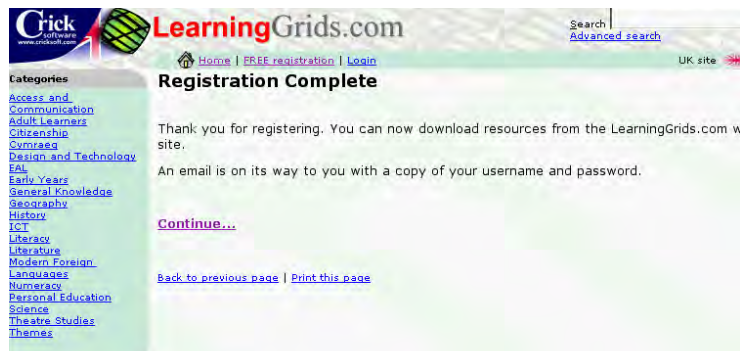
I would like to receive copies of the newsletter



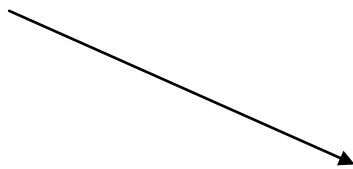
You are asked for your name, organisation and email address but this information is used only for identification and is never passed on. You will have to choose a username and a password. You have to choose a unique username and, if the name you choose has been used by someone else, then you will be asked to choose a different user name. You can also tick a box if you want to receive copies of the email Learning Grids newsletter.

When you have completed the form click on the Register button.

If you have chosen a unique user name you will see Registration Completed window. A copy of your user name and password will be sent to your email address.



Click on the Continue ... link which takes you back to the Welcome to LearningGrids.com screen. This time click on Login



Type in your user name and password and then click on the Log in button.



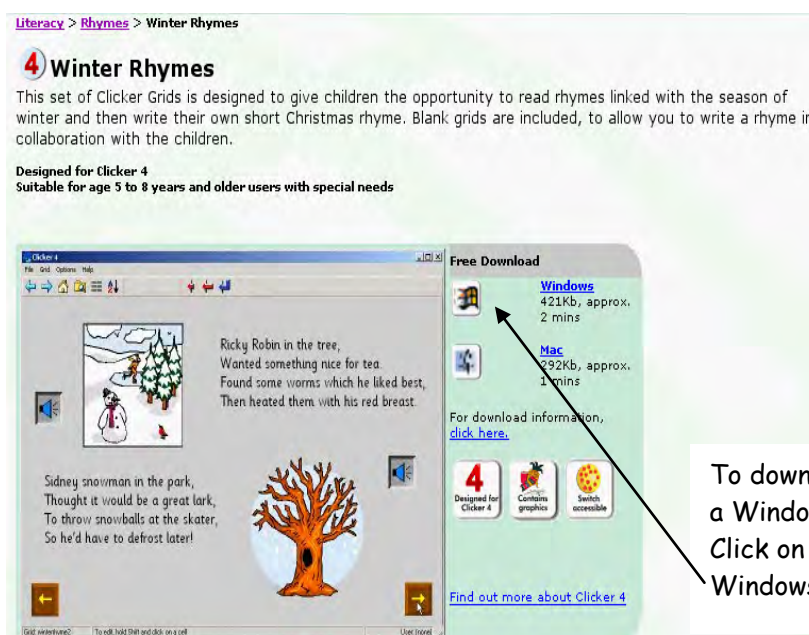
You are now ready to select and download resources. The grids have been organised into categories which you will see in a list on the left of the screen, starting with Access and Communication. Click on the category required e.g. Literacy which links to the sub category groups eg Rhymes.

The information on the page tells you how many and what type the grids are. There may be grids of just one type or there may be a mix of any of the three programs i.e. Clicker4, ClozePro and WordBar. Please make sure that you download the correct type of grid.

E.g. in the sub-category Rhymes there is a ClozePro Grid and some Clicker4 grids.

Click on the Grid you want to get some more information and the download icon.

E.g. Winter Rhymes



A box appears - select 'Save this program to disk' and choose where you want to save the file - it is recommended that you save the file onto your desktop or a floppy disk or other removeable media e.g. pen drive.

When the the .exe file has downloaded, double-click on its' icon to install the grid.

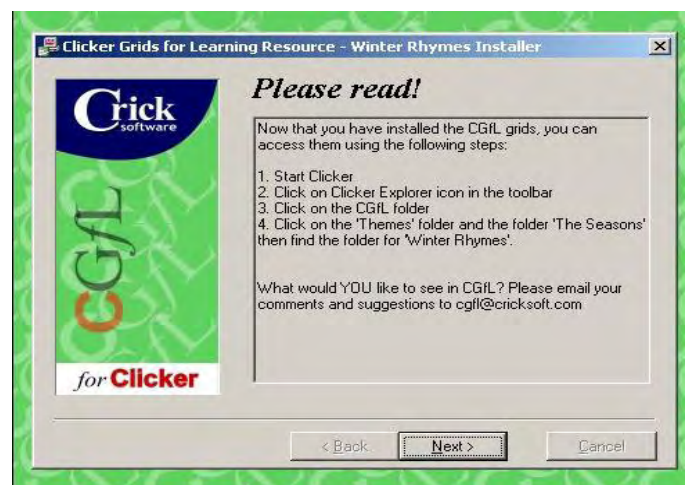


The CGfL installation window opens.

Follow the instructions on the screen.

During installation, you can choose the folder or 'category' where you want it installed - the default directory and folder is usually the best option but if you want to change it, click 'Browse' when the installer asks for a 'Destination Directory' and choose a folder.

The 'Please Read' screen tells you exactly how to get to the grid that has just been installed - for the Rhymes grid downloaded in this example, it is in the CGfL folder, in the Themes folder, in the Seasons folder, in a folder called Winter Rhymes.



When you have installed the resource, you can delete the .exe file you downloaded to your computer or, if you have it on a floppy disk or pendrive you can install it on other computers. The downloaded grid(s) are in the Clicker Grids for Learning (CGfL) folder.