

This program can enable the user to quickly make cloze exercises from simple picture grids for early or supported learners to more complex topic based material. This guide will take you through how to do both.

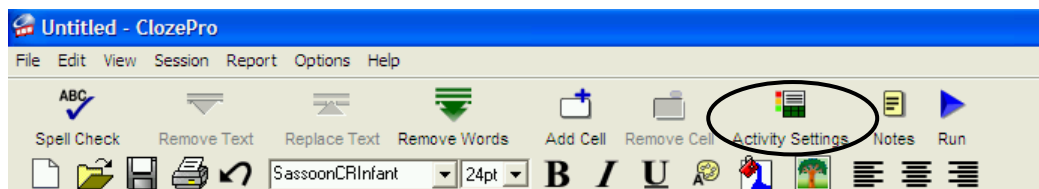
Picture Exercise - Early Literacy

Creating a new activity

Load the program from the start menu (should be in Crick Software) or desktop shortcut and choose **Create Activity**.



The new activity will open with the toolbar at the top.



Changing activity settings

Choose Activity Settings then make the following changes to the settings:

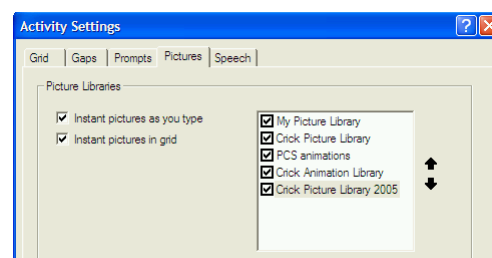
GRID

- Options - show different grid for each gap
- Pictures - position at bottom

PICTURES

To give you the widest choice of graphics make sure you have all the picture libraries selected.

- Instant pictures as you type
- Instant pictures in grid

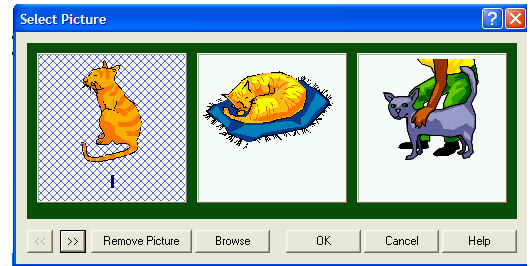


Now type in the sentence you wish to use (e.g. The cat sat on the mat.)



Changing the picture

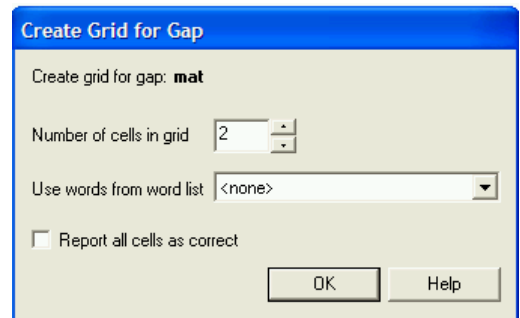
If the picture offered is not one you wish to use then you can change it. Double click on the word and picture to select then scroll along the others (if any) until you get to one you do want. Click on OK to choose.



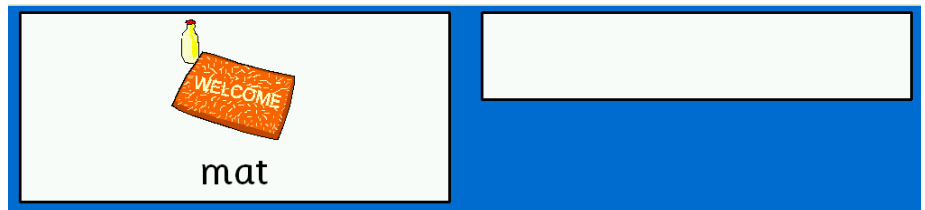
Creating a gap

Select the word you wish to remove (e.g. mat) then click on the **Remove Text** icon. You will then be prompted to state how you want the grid to be.

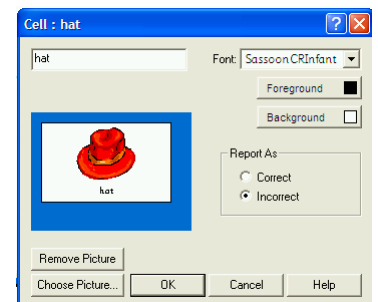
Change the **Number of cells in grid** to 2 and leave **Use words from word list** to **<none>**



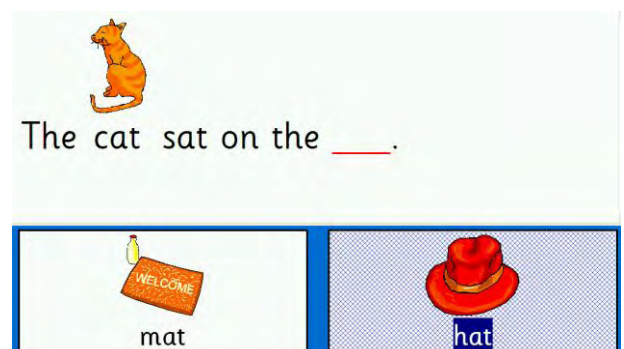
You now have one cell with the word you removed and a blank one ready for you to place another picture in.



Shift click on the empty cell and enter another word you wish to appear then click on **OK**.



Just to tidy up you may wish to select the text and increase the size so that the text and picture fills the page.



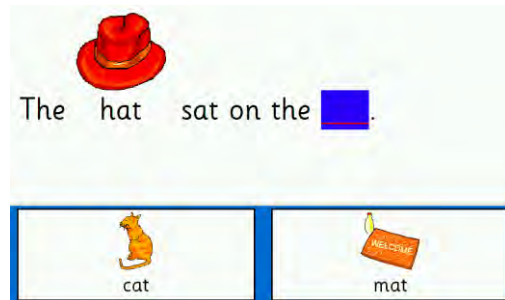
Save the activity

Choose either Control and S or File>Save and enter an appropriate name in an appropriate folder! You may wish to set up folders for particular activities - this can be done when you save. If this is to be the first of a sequence of activities then name it with a 1 at the end.

Creating additional activities

To keep the settings and create another file

- Make sure you are in Edit Mode (Go to **Edit** and **Edit Mode** if not)
- Click on the gap then **Replace Text**
- Now delete the whole sentence
- Enter new words as before and pictures should appear
- Create the gap as before
- Add the extra word into the second box
- Go to **File** and **Save As** naming it as filename2, filename3 and so on...






Linking activities

To have more than one activity linked you need to be careful in naming them. If you have filename1 then filename2 your activities will automatically link. If however you have filename1 then filename 2 (with a gap!) then they will not sequence.

Testing your activity

Select **Run** from the toolbar and complete the activity.

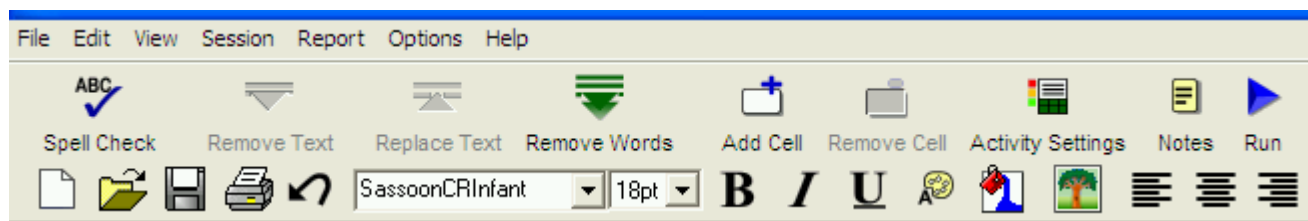
- When first loaded the cursor is automatically at the gap
- To listen to the sentence click on the speak tool 
- To enter the answer click in the cell with the word you are choosing
- To delete an answer click on the word or use the last gap tool 
- To move to the next page click on the flashing right arrow 

Text based exercise

This activity will take the user through creating a new document, entering and formatting text, selecting words to be removed, changing the gap pattern and displaying a selection of the words at the side or as a pop-up.

Load the program from the start menu (should be in Crick Software) or desktop shortcut and choose to **Create an Activity**.

The new activity will open with the toolbar at the top.

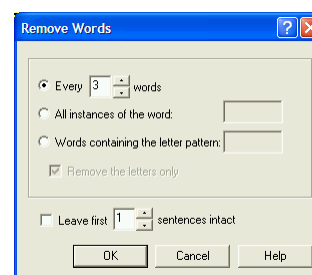


Creating document

Enter text or copy and paste from an existing document. Select all the text and change the font and size as desired. The background colour and text colour can also be changed to suit.

Creating gaps - removing words

Cloze Pro can automatically take out words at regular intervals, all instances of a word or particular letter patterns. Alternatively, you can delete words manually which is what we will do with this task.



Double click on any word you wish to remove then click on **Remove Text**.

The word chosen will appear at the bottom of the screen.

Continue until you have all the words you wish to remove.

How did the Second World War Start?

During the late 1930s, Germany was ruled by Adolf Hitler and the _____. Hitler wanted to rule _____. In 1938 his army marched into _____. In 1939 his army marched into Czechoslovakia. Then they marched into _____.

The governments in France and _____ were angry about this and they told _____ he must move his army out of Poland. He refused to do this. So on 3 September 1939 Britain and France declared war on _____ and The _____ World War began.

Germany	Europe	Nazis	Poland
Britain	Hitler	Austria	Second

Save the activity

Choose either Control and S or File>Save and enter an appropriate name in an appropriate folder! You may wish to set up folders for particular activities - this can be done when you save. If this is to be the first of a sequence of activities then name it with a 1 at the end.

Running your activity

Select **Run** from the toolbar and complete the activity.

- When first loaded the cursor is at the first gap
- Movement between gaps is automatic
- You can directly click on a gap if you wish to choose the order of answering
- To delete an answer click on the word

Adjusting the page

If the words don't appear as you would wish then you can move the pointer to the edge where the document and the words meet. The pointer will change to a double-headed arrow and the size of both can be adjusted.

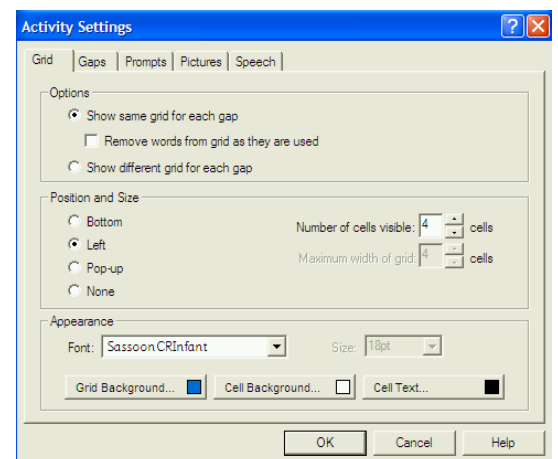
Changing the layout

Although this activity is fine as it is we are going to look at some of the additional features. To make any changes you need to go to the **Edit** menu and select **Edit Mode** then select **Activity Settings** from the toolbar.

GRID

Position and Size

Options for displaying the grid are bottom, left, appearing as a pop up when you click on a gap or not appearing at all. The default is at the bottom so requires no changes, others need selected. You may wish to experiment to see which is best.

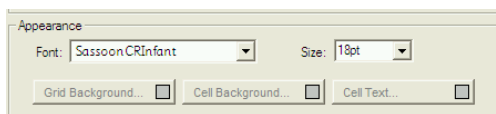
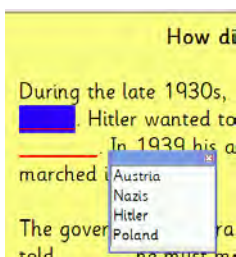


With the words at the **bottom** you can choose how many cells there are on each line. Alter this by changing the **Maximum width of grid**.

With words at the **left** you can choose whether all or only some of the words are displayed. Alter this by changing the **Number of cells visible**. Note that you won't see the effect of this until you **Run** the activity.

The image shows a screenshot of the activity interface. On the left, there is a vertical toolbar with icons for home, search, back, forward, and a location pin. Below the toolbar is a list of words: 'Austria', 'Nazis', 'Hitler', and 'Poland'. On the right, there is a yellow text area with the title 'How did the Second World War Start?'. The text reads: 'During the late 1930s, Germany was ruled by Adolf Hitler and the [redacted]. Hitler wanted to rule _____. In 1938 his army marched into _____. In 1939 his army marched into Czechoslovakia. Then they marched into _____. The governments in France and _____ were angry about this and they told _____ he must move his army out of Poland. He refused to do this. So on 3 September 1939 Britain and France declared war on _____ and The _____ World War began.'

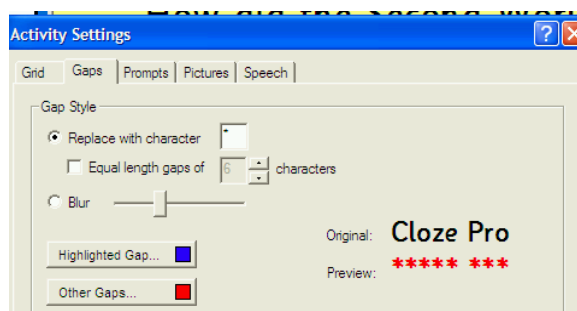
With a **Pop-up** only the text appears on screen and the pop-up, with all or selected words, only appear when the gap is clicked on. Should you wish you could change the **Appearance** of the text font, size and colours of the pop-up by selecting from the options given.



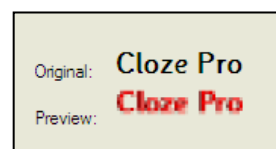
GAPS

Gap style

Changing the gap character may provide greater support for a user letting them see the number of letters in the missing word: using an asterisk looks good. Alternatively making each gap the same length can reduce the support.

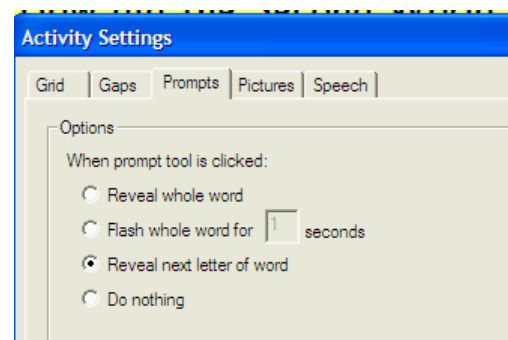


Using a **Blur** can provide help in giving an outline of the word. Use the slider to adjust the extend of the blurring.



PROMPTS

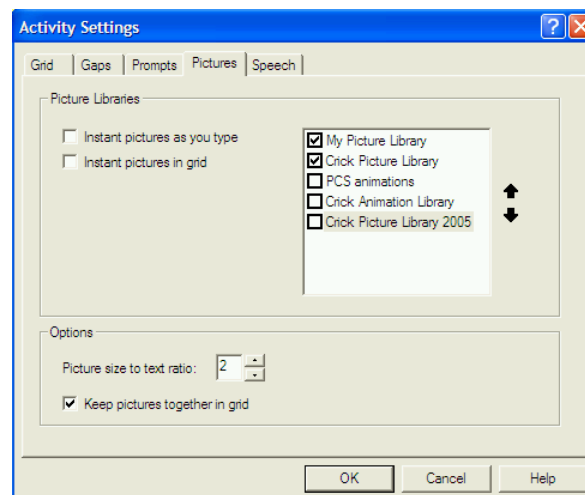
There are a number of options for setting the level of support when the user clicks on the prompt button - choose the one most appropriate for your user.



PICTURES

This gives you the option to automatically insert pictures into your text, the grid, both or neither. Libraries can be chosen to select from and the picture size to text ratio can be altered.

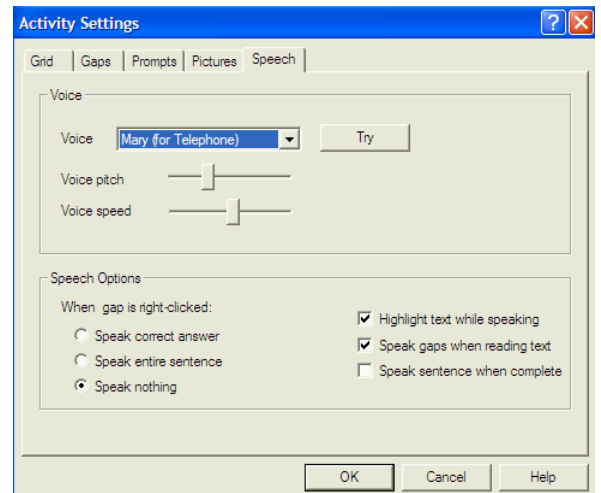
There are no pictures in this activity although you could insert a graphic at the top of your page from a graphics library to illustrate your topic should you wish.



SPEECH

Changes can be made to the actual voice, pitch and speed where necessary. The speech options can provide additional support by offering the correct answer, the whole sentence (with answer if selected) or nothing at all.

If you don't want the gap word to be spoken when the sentence is read then deselect '**Speak gaps when reading text**




Once all your changes have been made you should select **OK** then **File** and **Save**.

Saving activity with different settings

If you wish to make changes to an activity to provide appropriate support for an individual, whilst leaving the content the same, you can do so by choosing **File Save As** and changing the filename.

Inserting an illustrative graphic

You could add a graphic using the picture library tool  and finding a graphic either from the built in library or pictures stored in your own Picture Library. It is worth sorting these before you start creating your activity.