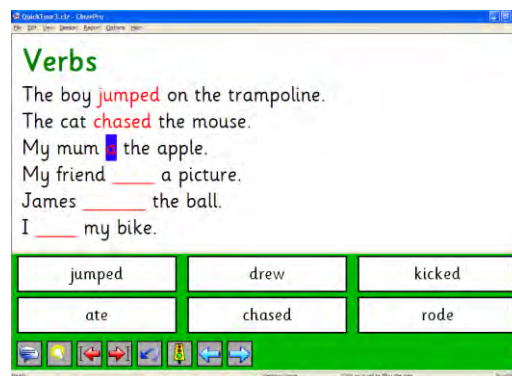
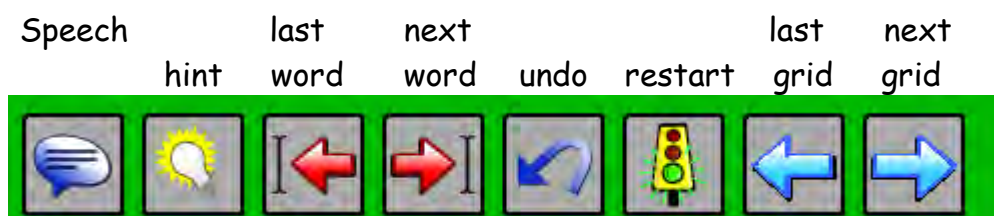


'Create simple or complex cloze activities where sentence completion or multiple choice questions can be an aid to learning.'

This program provides a quick easy way to produce accessible 'cloze' activities from simple tasks with picture support to subject based text files. There are example activities for all ages as well as a bank of resources downloadable from the website [www.learninggrids.com](http://www.learninggrids.com). An outline of the features of the program are given here; for instructions on how to create your own activities see our other Cloze Pro Quick Guides.

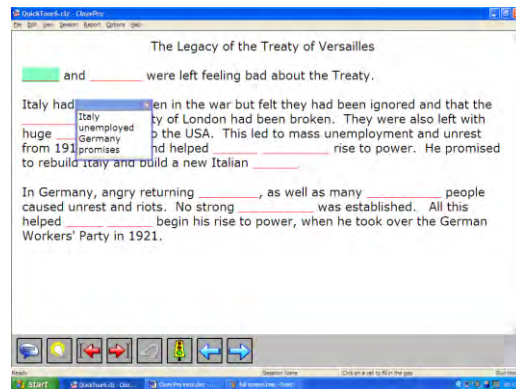
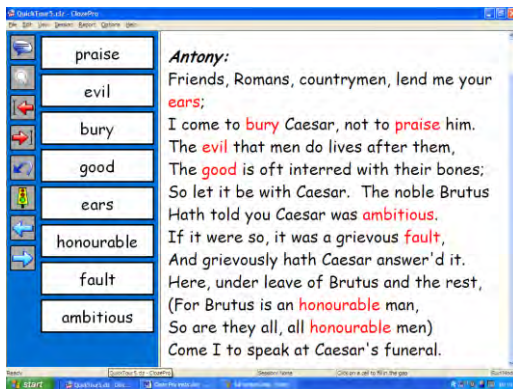


- Automatically advances through the gaps to the next missing word
- You can choose whichever gap you want by clicking, using the tab key or the red arrow on toolbar
- Click on speech to hear the full sentence (includes the missing word)
- Right click on a word to hear it
- Click on the light bulb to get a hint (letter or whole word support)

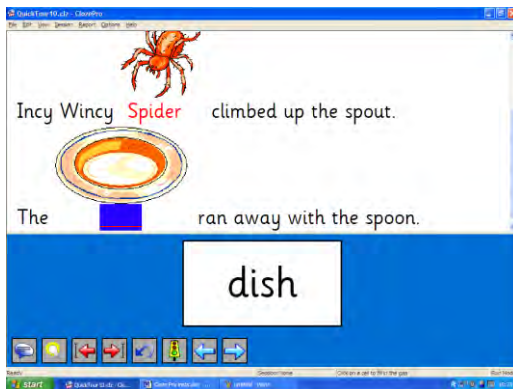


## OPTIONS

- Can set words to be removed from grids as you use them
- Grid can be at the bottom, the side or as a pop-up (older users)



- Colours for grid and words can be set to individual preferences
- Extra words can be included that are not part of the text
- Prompts/hints can be set to have the full word entered, flash for a moment or to reveal one letter at a time
- Different grids can be set to open when selecting a word
- Indication of a missing word can be a line \_\_\_\_\_, dotted line ..... or blurred image
- An activity can be presented without any grid for support
- Pictures can be used in the grid and text as additional support



## PICTURES

- The program comes with its own library of about 1000 pictures
- You can add pictures stored anywhere on your machine
- Pictures stay attached to files

## LINKING GRIDS

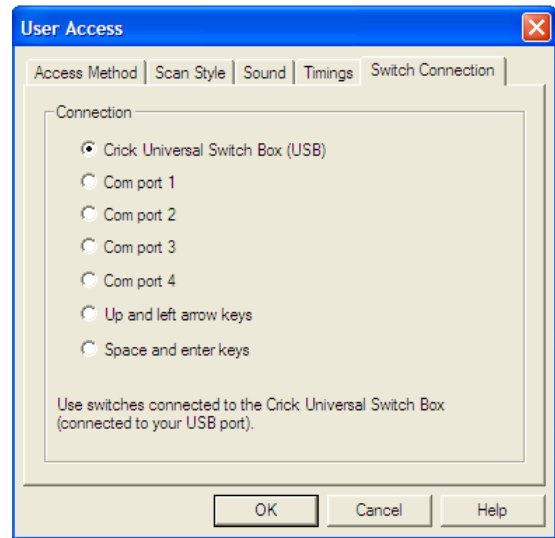
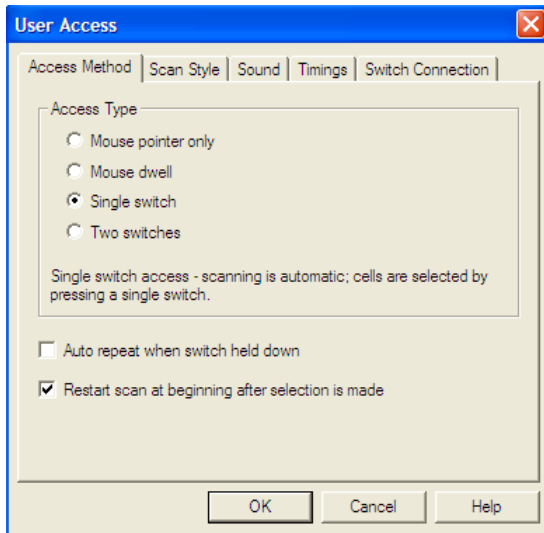
- Pages can be linked by numbering them (3bears1.clz 3bears2.clz)
- Clicking on blue arrows will move between grids

## PRINTING

- Once an activity has been created you can print it to create worksheets

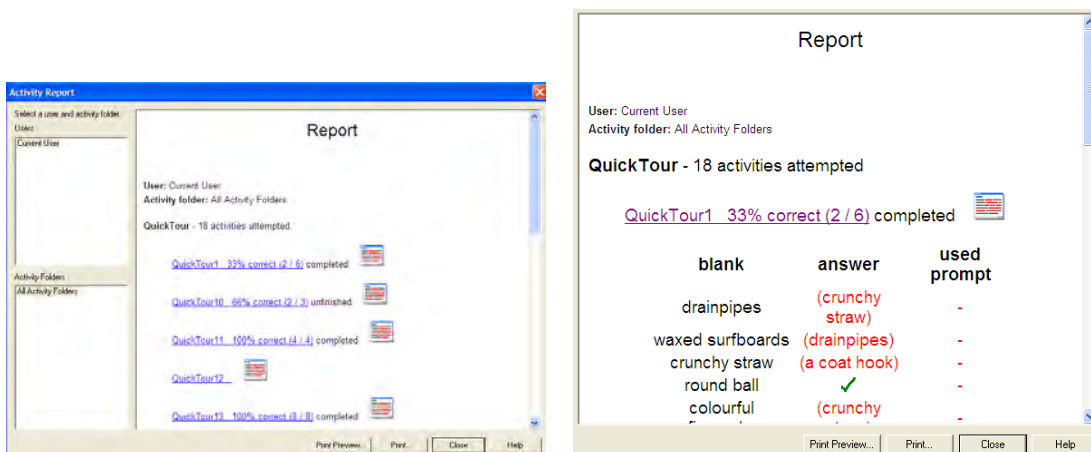
## SCANNING

Select Options and User Access to set scanning for single or two switches then select the appropriate Switch Connection.



## REPORTING

- Details are obtained through Report Menu/Show Report
- Click underlined activities to get more details



- To view and compare pupil activities you need to choose Session/Start Session