

Intellipics (Mac)

Using Digital Camera Photographs

Quick Guide

Updated 04/05

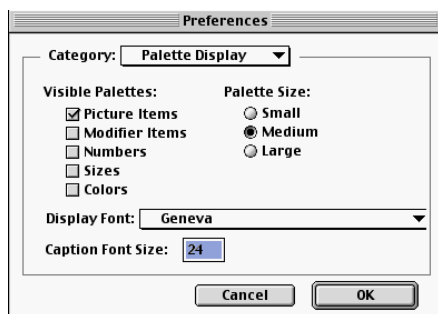
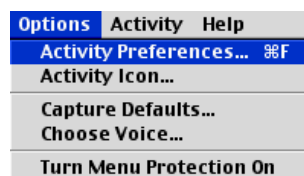
The easiest way to get a digital camera photo into **IntelliPics** is to use the **PictureViewer**.

If you are not sure whether your computer has this program, look in the Apple menu items, go down to **Sherlock** and type in '**PictureViewer**'. Alternatively go to Macintosh HD, Applications, QuickTime and then **PictureViewer**.

You must open up PictureViewer before you open up IntelliPics.

Now open up **IntelliPics**, and choose to create a new activity. Do this by going to **File** and **New**. Now is a good time to save, call this activity 'Digital Camera'.

On the toolbar along the top go to **Options** and **Activity Preferences**.

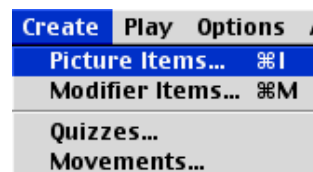


Now the **Preferences** will appear, this is where you decide the feature that will be on the screen.

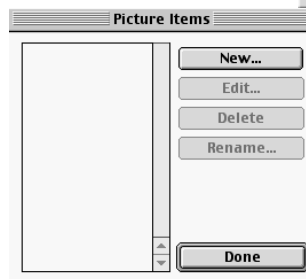
For this example choose **Picture Items** only.

Click on **OK** and this will take you back to the main screen, which will now have a column down the left- hand side.

To create picture items, go to **Create** and **Picture Items**.



A new window will open called **Picture Items**.



Click on **New** and name the picture



CALL Centre
University of Edinburgh, Paterson's Land,
Holyrood Road, Edinburgh, EH8 8AQ
Tel: 0131 651 6236
<http://www.callcentrescotland.org.uk>

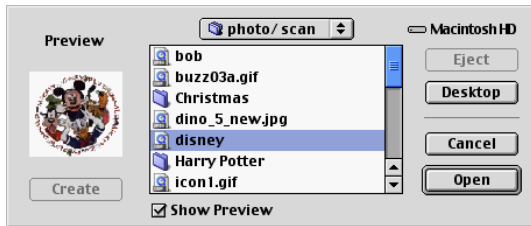
CALL Centre

Copyright © CALL Centre 2003

A window will appear with the item name at the top. Now you are ready to insert the photograph.

Click and drag down the **application menu** (top right-hand corner) to see all the programs you have open. Click on **PictureViewer** to open it up.

When **PictureViewer** opens up go to **File** and **Open** and find the folder where you stored the photographs.



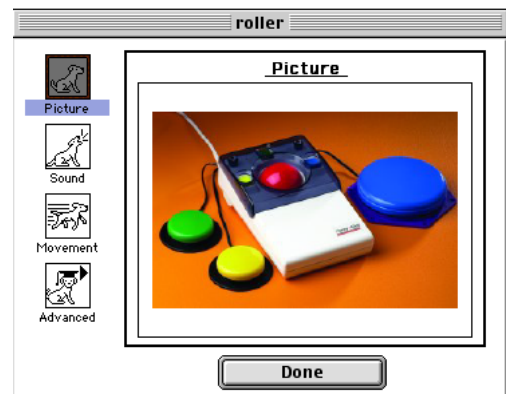
Once you have found the folder you should see all the files and pictures. If you single click on the picture, it will appear in the preview window. Click on **Open** once you have the picture you wish to use.

Still in **PictureViewer**, go to **Edit** and **Copy**. Go back up to the **application menu** and select **IntelliPics**.

The picture item you named early will still be in the screen, make sure that **Picture** is highlighted,

Go to **Edit** and then **Paste**, the photograph will now appear.

Now you can add sound, movement and more complex features to the photograph.



Repeat these steps to add more items with digital photographs.