

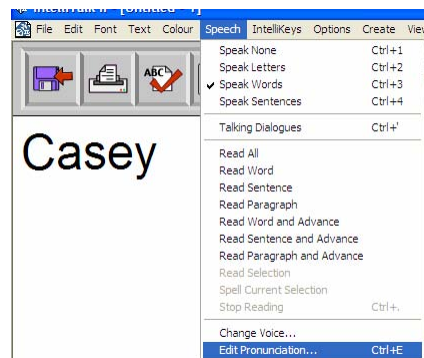
Changing pronunciation of words

When a word is not pronounced correctly follow these steps.

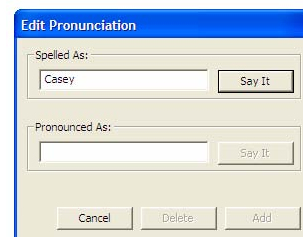
Select **Edit Pronunciation** from the **Speech** menu

or

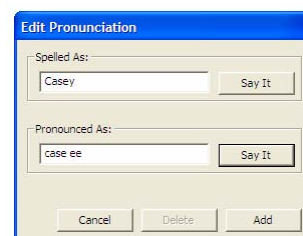
Press **Control E**



Enter the word in the *Spelled As* box and click on **Say It** if you want to confirm how it is pronounced.



Put into the *Pronounced As* box the way you think it may need to be spelt – try phonetics or combinations of other words which may sound the same – then click on the **Say It** box beside.



Once you are happy with how it sounds then click onto the **Add** box.

Now each time you enter that word it will say it correctly.

